

FORCER ASSY P/N:

1160-1-090-01

**PERFORMANCE WHEN MATED WITH
MAGNET ASSEMBLY IAW 1160-1-096-01:**

Kt : 57.0 (±10%) OZ-IN/AMP
Ke : 35.0(±10%) Vpk/RPM
Res : 1.40 (±10%) OHM
L : .55 (±25%) mH

NUMBER OF MAGNET POLES: 64/360°

LEAD COLOR CODE:

POWER LEADS

22 AWG, 48" MIN LENGTH
TEFLON COATED, FLYING LEADS

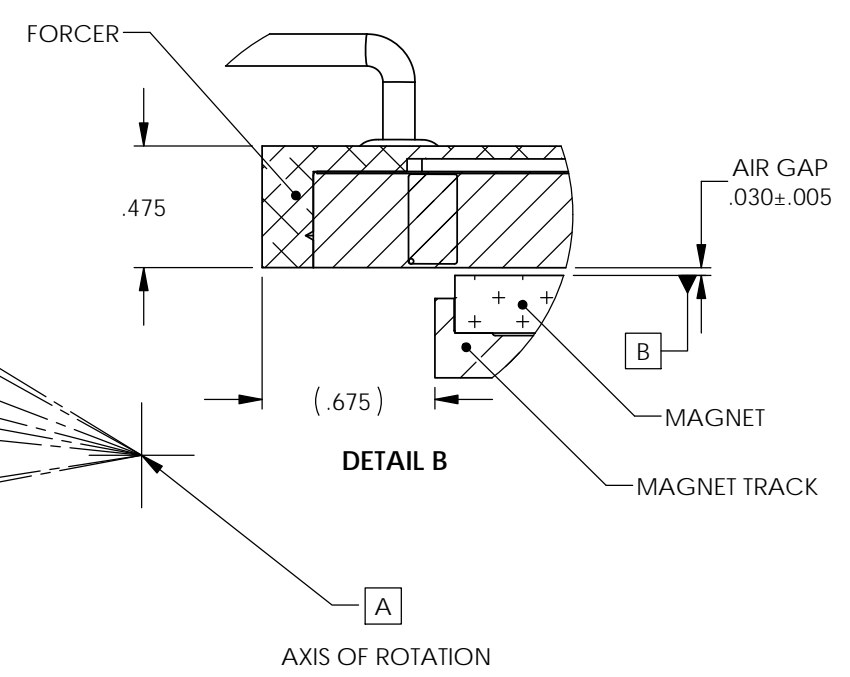
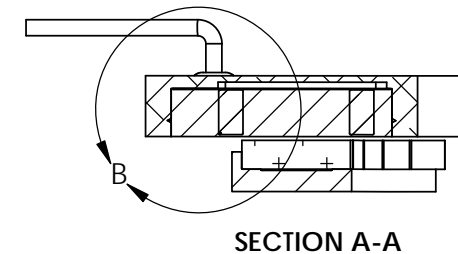
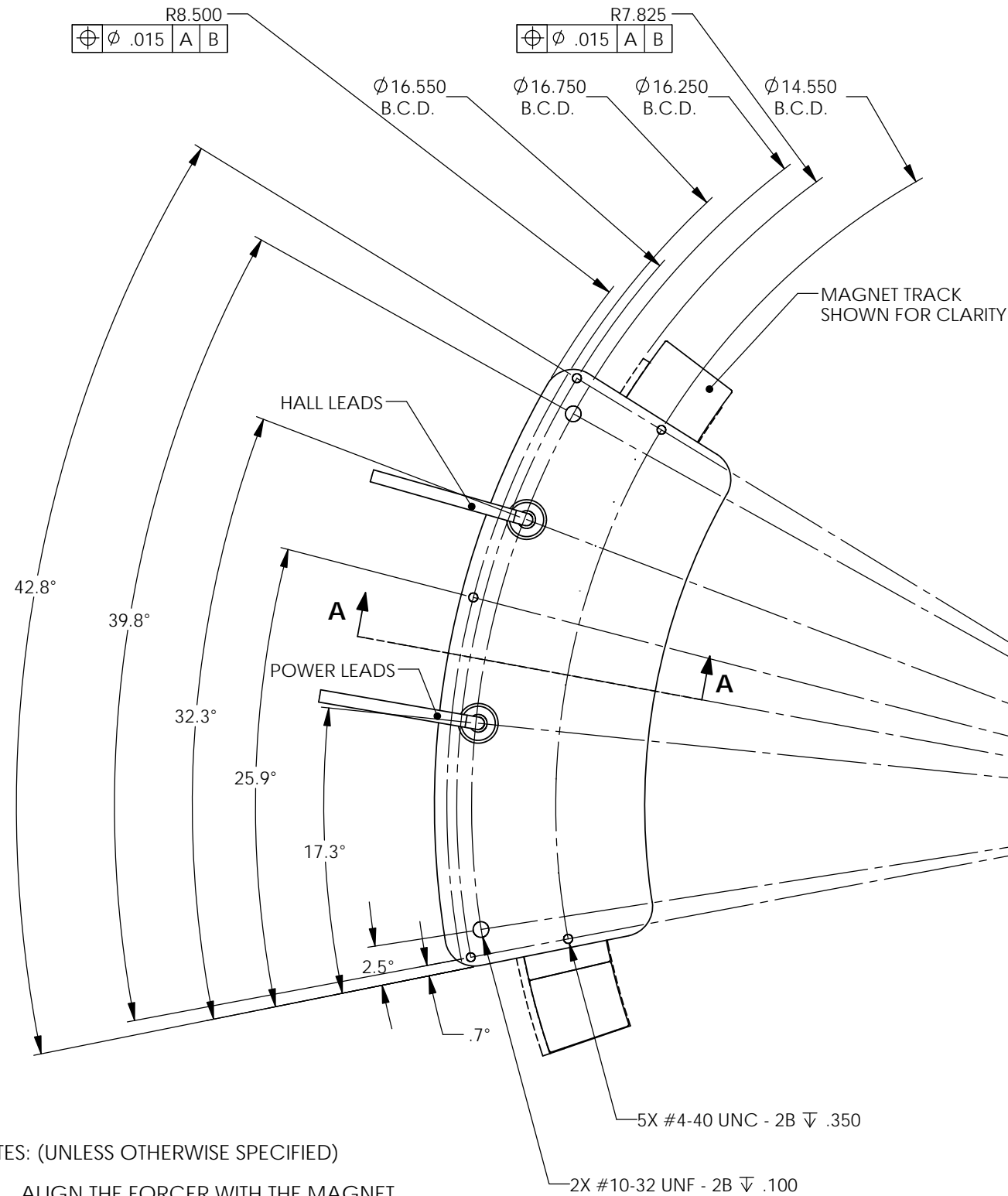
RED - PHASE A
BLK - PHASE B
WHT - PHASE C

HALL LEADS

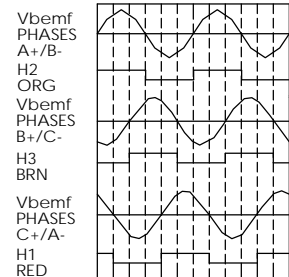
26 AWG, 48" MIN LENGTH
TEFLON COATED, FLYING LEADS

GRN - +5 VOLTS
YLW - GND
RED - HALL 1
ORG - HALL 2
BRN - HALL 3

REV.	DCN:	DESCRIPTION OF CHANGE:	DATE:	SIGN
B	000446	CHANGED NOTES	24-OCT-06	A.L.
C	001574	ADDED SPECIFICATION NUMBER OF MAGNET POLES	29-MAR-10	GSM
D	002953	ADDED PHASE DIAGRAM UPDATED DIMENSIONS	13-APR-12	ADR



PHASE RELATION OF BACK EMF
PHASE-TO-PHASE VOLTAGES AND HALL
OUTPUTS DURING CW MOVEMENT OF FORCER
VIEWED FROM LEAD END



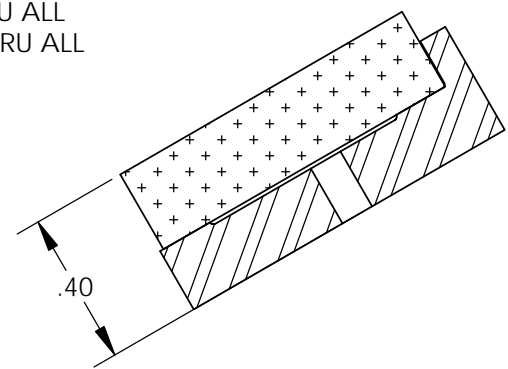
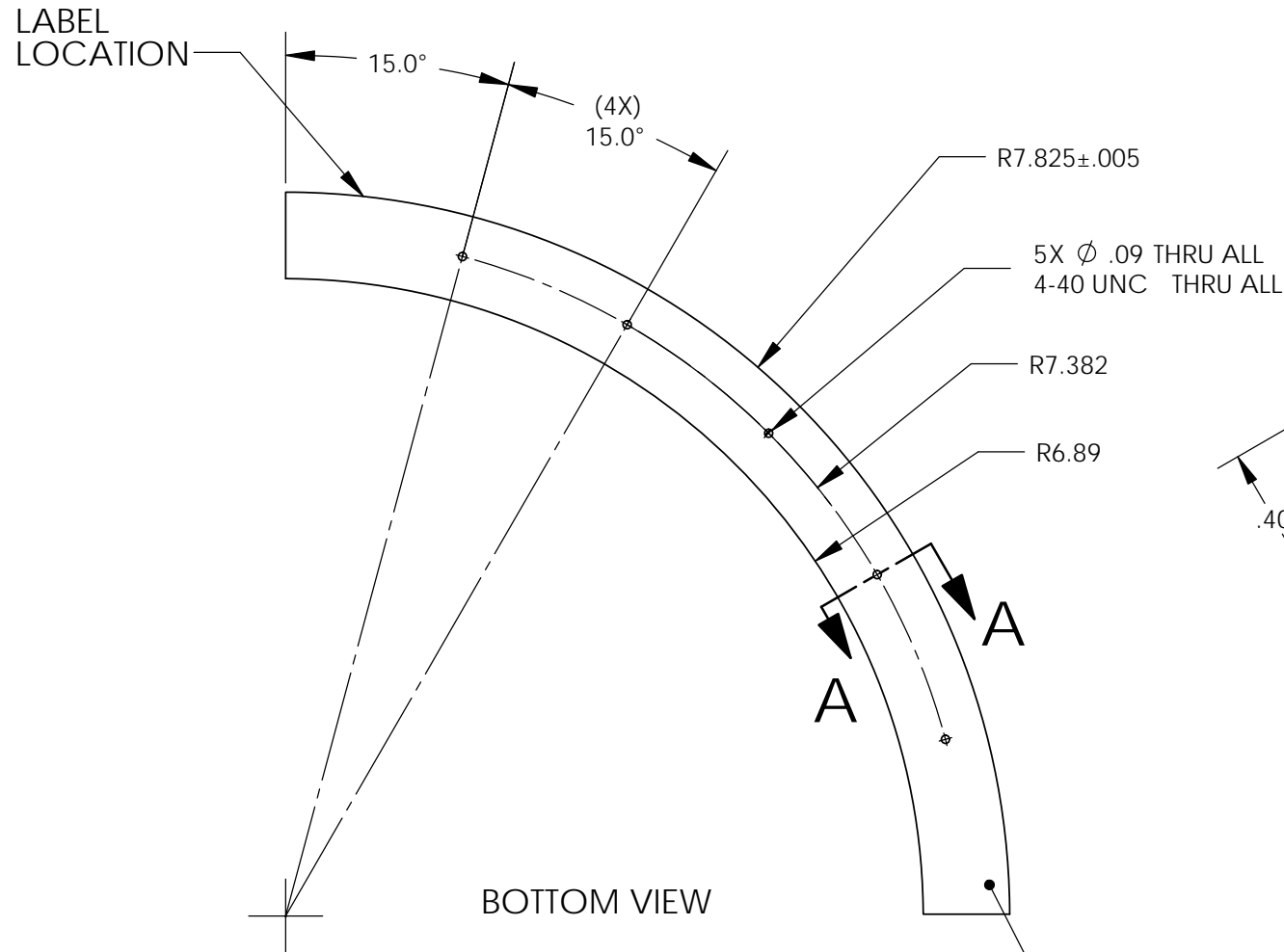
NOTES: (UNLESS OTHERWISE SPECIFIED)

- ALIGN THE FORCER WITH THE MAGNET TRACK SO THE FORCER AXIS OF ROTATION IS CONCENTRIC WITH THE MAGNET TRACK AXIS OF ROTATION.
- FORCER SHOULD BE MOUNTED SO THAT THE AIR GAP BETWEEN THE FORCER'S DATUM B AND THE MAGNET ASSEMBLY IS .030" NOMINALLY.

THIS DRAWING CONTAINS PROPRIETARY INFORMATION OF APPLIMOTION AND MAY NOT BE IN WHOLE OR IN PART, DUPLICATED OR DISCLOSED OR USED FOR MANUFACTURE OF ANY PART DISCLOSED HEREIN WITHOUT THE PRIOR WRITTEN PERMISSION OF APPLIMOTION		APPLIMOTION, INC.		CAGE CODE: 3DRL5	DRAWING SYMBOLS & TOLERANCE PER ANSI Y14.5
DWG. NO.: 1160-1-095-01	PROJECT: 1160	SHEET 1 of 1		THIRD ANGLE PROJECTION:	UNLESS OTHERWISE SPECIFIED ALL DIMENSIONS ARE IN INCHES TOLERANCES ARE:
TITLE: FORCER INTERFACE	SCALE: N/A	UNITS: INCH	SURFACE FINISH: N/A	DECIMALS LINEAR ANGULAR X ±.020 ±1° XX ±.010 ±0.2° XXX ±.005 ±0.01°	
DRAWN BY: ARL 07/05/2006	CHECKED BY:	APPROVED BY: SRP 07/05/2006	<p style="text-align: center;">CONFIDENTIAL</p>		

REV.	DCN:	DESCRIPTION OF CHANGE:	DATE:	SIGN
A	001575	INITIAL RELEASE	29-MAR-10	GSM
B	004170	ADDED LABELS	2014-MAY-02	AMS

APPLIMOTION, INC	P/N 1160-1-096-02	S/N YMMDD-NNN
------------------	-------------------	---------------



BOTTOM VIEW

SECTION A-A

\square .005

NOTES (UNLESS OTHERWISE SPECIFIED)

1 3 LABELS ON EDGE

LABEL 1. APPLIMOTION, INC.
 LABEL 2. P/N 1160-1-096-02
 LABEL 3. S/N YMMDD-NNN

THIS DRAWING CONTAINS PROPRIETARY INFORMATION OF APPLIMOTION AND MAY NOT BE IN WHOLE OR IN PART, DUPLICATED OR DISCLOSED OR USED FOR MANUFACTURE OF ANY PART DISCLOSED HEREIN WITHOUT THE PRIOR WRITTEN PERMISSION OF APPLIMOTION

CONFIDENTIAL

APPLIMOTION, INC.		CAGE CODE: 3DRL5	DRAWING SYMBOLS & TOLERANCE PER ANSI Y14.5-2009 UNLESS OTHERWISE SPECIFIED ALL DIMENSIONS ARE IN INCHES TOLERANCES ARE:
DWG NO: 1160-1-096-02	PROJECT: 1160	THIRD ANGLE PROJECTION:	
TITLE: MAGNET ASSEMBLY INTERFACE		SHEET 1 of 1	
DRAWN BY: GSM 3/29/2010	CHECKED BY: SRP 3/29/2010	COG ENGINEER: DML 3/29/2010	
SCALE: NTS		UNITS: INCH	SURFACE FINISH: N/A
			DECIMALS .X ±0.020 ±1* .XX ±0.010 ±0.2* .XXX ±0.005 ±0.01*

PRINTED COPIES OF THIS DOCUMENT ARE NOT CONTROLLED