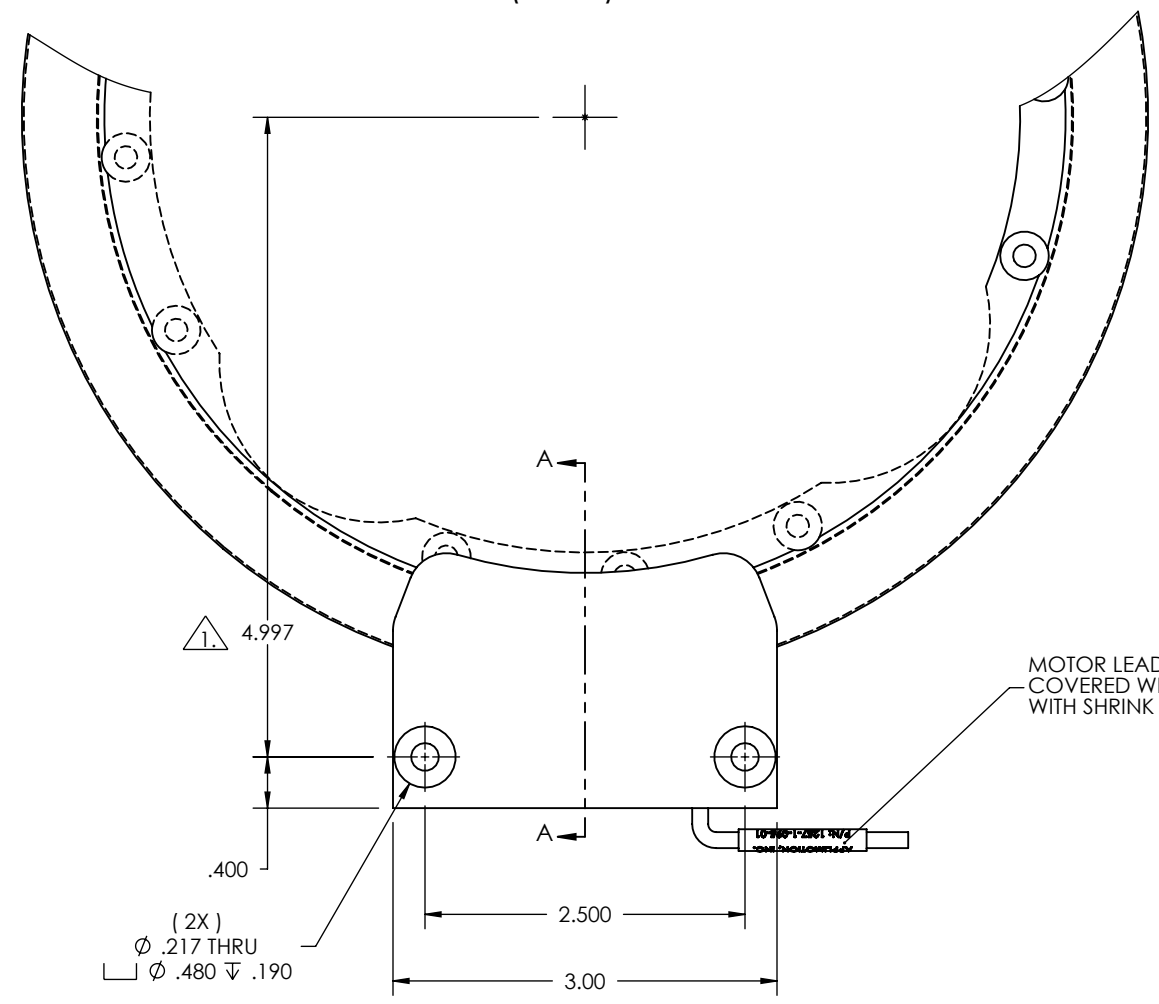
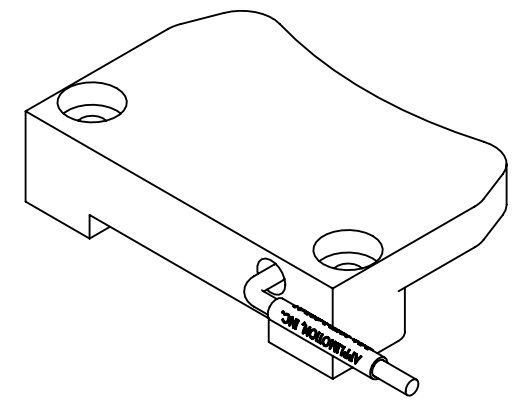


FORCER ASSY P/N:
1257-1-100-01

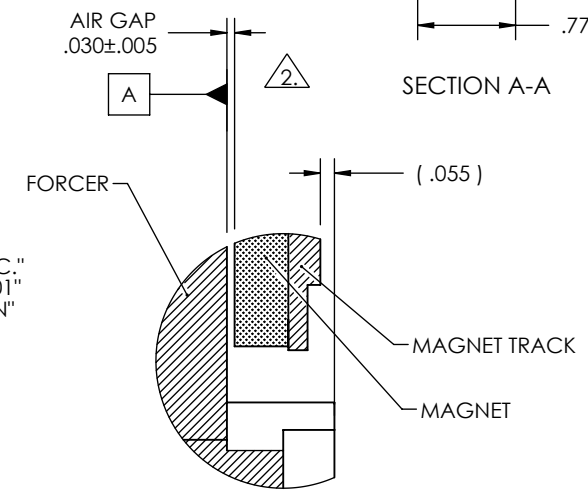
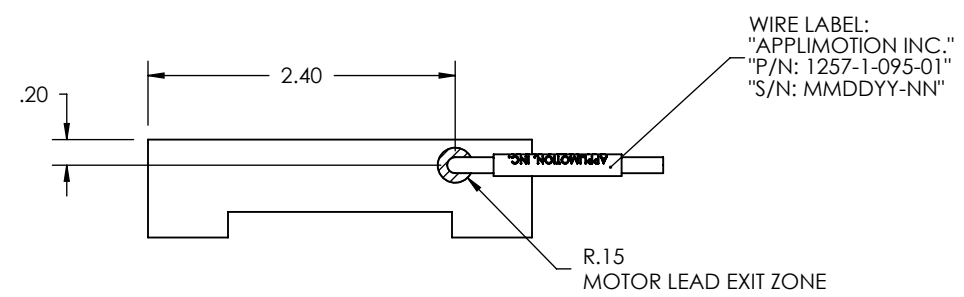
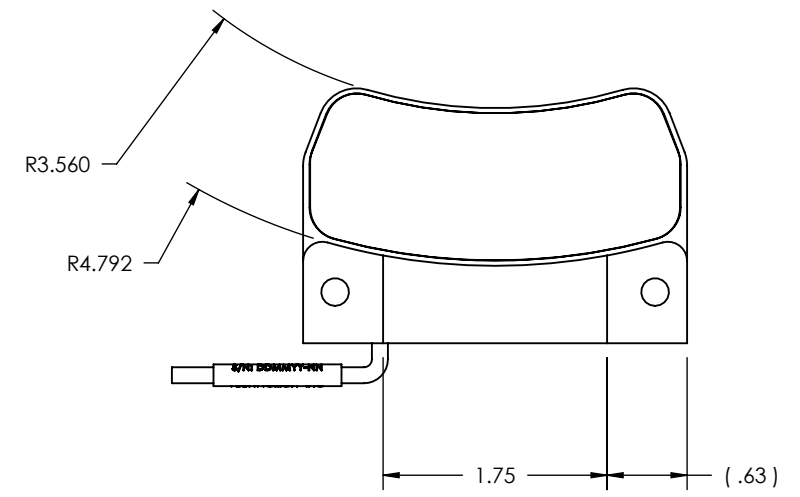
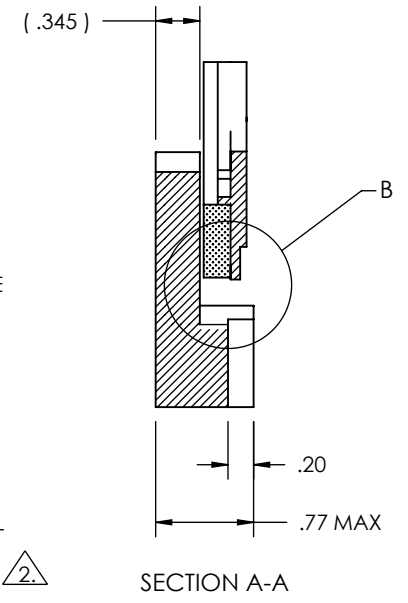
PERFORMANCE WHEN MATED AS SHOWN
WITH MAGNET ASSEMBLY 1257-1-096-01:
Kt: 27.3 (±10%) OZ-IN/AMP.
Ke: 20.2 (±10%) V/KRPM
Res: 5.3 (±10%) OHM
L: 1.1 (±25%) mH

- NOTES:**
- ALIGN THE FORCER RADIALLY SO THE FORCER ϕ .217" THRU HOLES IS 4.997" FROM THE CENTER OF THE MAGNET ASSEMBLY P/N: 1257-1-096-01.
 - FORCER SHOULD BE MOUNTED SO THAT THE AIR GAP BETWEEN THE FORCER DATUM A AND THE MAGNET ASSEMBLY IS .030" NOMINALLY.
 - LEAD COLOR CODE:
PWR LEADS - 22 AWG, TEFLON COATED
BLK - PHASE A
RED - PHASE B
WHT - PHASE C

| REV. | DCN: | DESCRIPTION OF CHANGE: | DATE: | SIGN |
|------|--------|------------------------------------|-------------|------|
| P1 | 000860 | INITIAL RELEASE | 22-FEB-2008 | A.L. |
| A | 000895 | UPDATED NOTES AND PERFORMANCE DATA | 04-ARP-2008 | A.L. |



MOTOR LEADS 36" IN MIN. LENGTH COVERED WITH PET EXPANDABLE SLEEVE WITH SHRINK TUBING ON ENDS

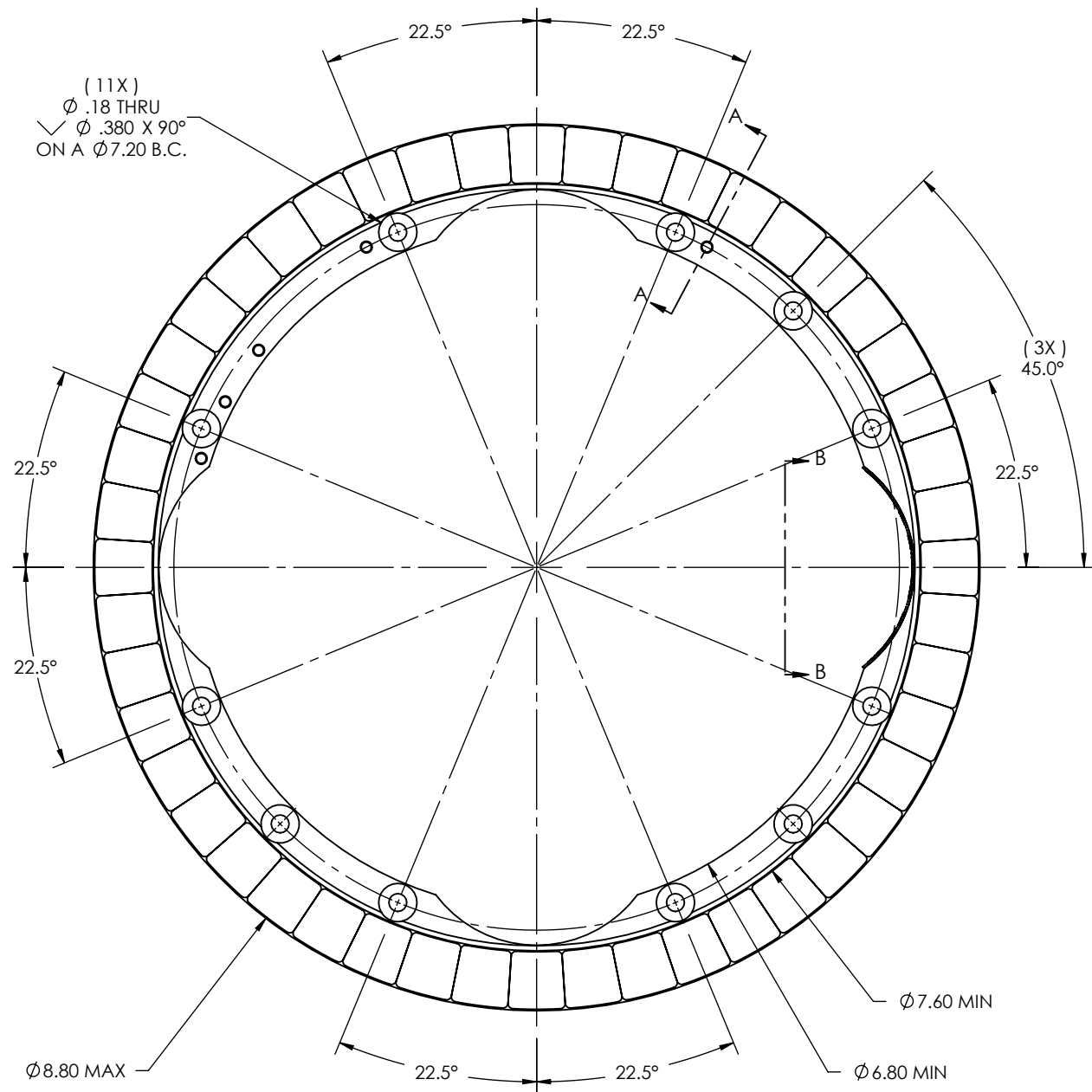


| | | | | | |
|--|------------------|-----------------------------------|-----------------------------------|-------------------------|--|
| THIS DRAWING CONTAINS PROPRIETARY INFORMATION OF APPLIMOTION, INC. AND MAY NOT BE IN WHOLE OR IN PART, DUPLICATED OR DISCLOSED OR USED FOR MANUFACTURE OF ANY PART DISCLOSED HEREIN WITHOUT THE PRIOR WRITTEN PERMISSION OF APPLIMOTION INC. | | APPLIMOTION, INC. | | CAGE CODE: 3DRL5 | DRAWING SYMBOLS & TOLERANCE PER ANSI Y14.5 |
| DWG. NO.: 1257-1-095-01 | PROJECT: 1257 | TITLE: COIL ASSEMBLY INTERFACE | | THIRD ANGLE PROJECTION: | UNLESS OTHERWISE SPECIFIED ALL DIMENSIONS ARE IN INCHES TOLERANCES ARE: |
| SCALE: N/A | UNITS: INCH | SHEET 1 of 1 | | SURFACE FINISH: N/A | DECIMALS LINEAR ANGULAR .X ±0.020 ±1° .XX ±0.010 ±0.2° .XXX ±0.005 ±0.01° |
| DRAWN BY: ARL 02/21/2008 | | CHECKED BY: | APPROVED BY: SRP 02/22/2008 | SURFACE FINISH: N/A | |

CONFIDENTIAL

MAGNET ASSEMBLY P/N:
1257-1-200-01

| REV. | DCN: | DESCRIPTION OF CHANGE: | DATE: | SIGN |
|------|--------|------------------------|-------------|------|
| P1 | 000860 | INITIAL RELEASE | 22-FEB-2008 | A.L. |
| A | 000895 | ADDED LABEL INFO | 04-APR-2008 | A.L. |



(2X)
M3X0.5 - 6H THRU
45° CHAMFER FIRST THREAD
ON A Ø7.15 B.C.

Ø8.29

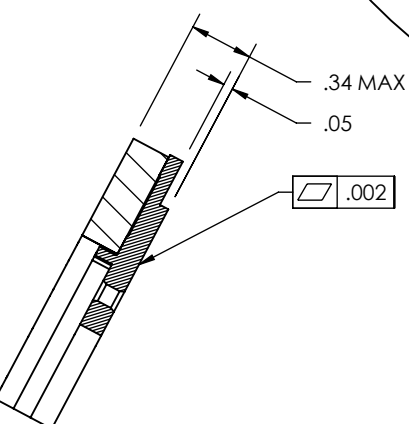
(4X)
Ø2.50 THRU
EQUALLY SPACED
ON A Ø5.00 B.C.

(3X)
M3X0.5 - 6H THRU
45° CHAMFER FIRST THREAD
ON Ø7.00 B.C.

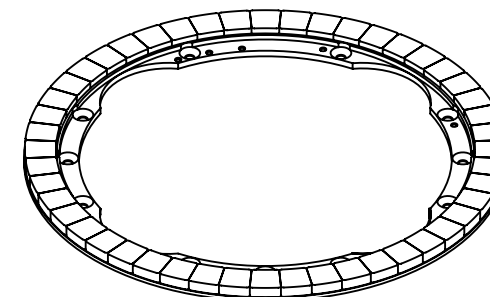
38.0°

28.0°

18.0°



SECTION A-A



APPLIMOTION, INC. P/N: 1257-1-096-01 S/N: MMDDYYNN

LABEL: "APPLMOTION, INC."

LABEL: "P/N: 1257-1-096-01"

LABEL: "S/N: MMDDYY-NN"

SECTION B-B

| | | | | | |
|--|------------------|-----------------------------------|--|---|--|
| THIS DRAWING CONTAINS PROPRIETARY INFORMATION OF APPLIMOTION, INC. AND MAY NOT BE IN WHOLE OR IN PART, DUPLICATED OR DISCLOSED OR USED FOR MANUFACTURE OF ANY PART DISCLOSED HEREIN WITHOUT THE PRIOR WRITTEN PERMISSION OF APPLIMOTION INC. | | APPLIMOTION, INC. | | CAGE CODE: 3DRL5 | DRAWING SYMBOLS & TOLERANCE PER ANSI Y14.5 |
| DWG. NO.: 1257-1-096-01 | PROJECT: 1257 | THIRD ANGLE PROJECTION: | SHEET 1 of 1 | UNLESS OTHERWISE SPECIFIED ALL DIMENSIONS ARE IN INCHES TOLERANCES ARE: | |
| TITLE: MAGNET ASSEMBLY INTERFACE | SCALE: NTS | SURFACE FINISH: N/A | DECIMALS LINEAR ANGULAR .X ±0.020 ±1° .XX ±0.010 ±0.2° .XXX ±0.005 ±0.01° | | |
| DRAWN BY: ARL 01/31/2008 | CHECKED BY: | APPROVED BY: SRP 02/22/2008 | UNITS: INCH | | |

CONFIDENTIAL