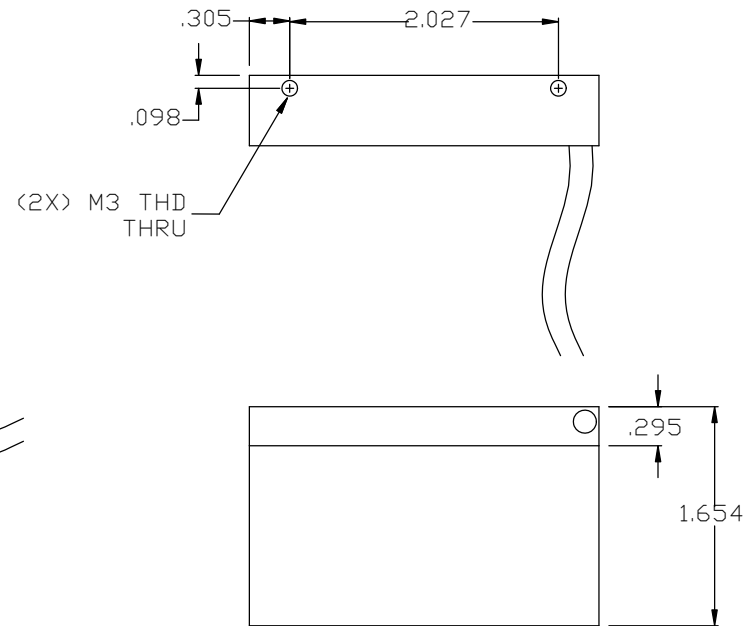
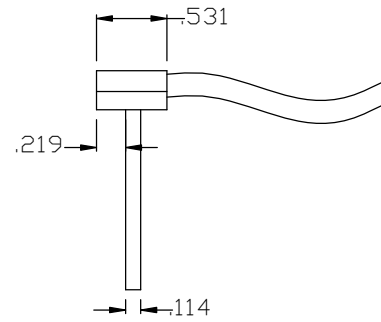
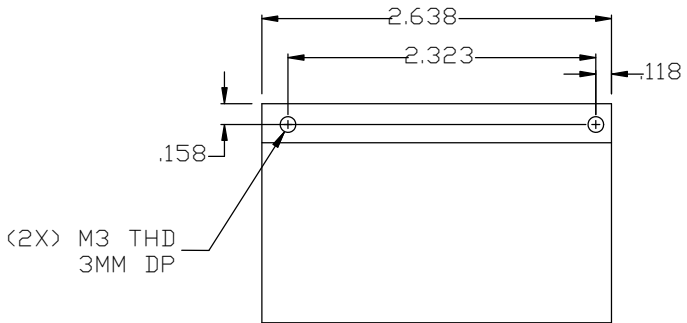


PERFORMANCE WITH MAGNET
TRACK 1215-1-096-01

Kf: 11.35 ($\pm 10\%$) N/Arms
 Res: 5.5 ($\pm 10\%$) Ω HM
 Ke: 9.2($\pm 10\%$) Vpk Sec/M
 L: .6 ($\pm 25\%$) mH

MAGNETIC PITCH: 16.5MM

| REV. | DCN: | DESCRIPTION OF CHANGE: | DATE: | SIGN |
|------|--------|------------------------------------|-----------|------|
| A | 000800 | INITIAL RELEASE | 19-DEC-07 | DML |
| B | 002917 | CHANGED NOTE 1. CABLE WAS 3X 24AWG | 03-FEB-12 | ADR |



POWER LEADS

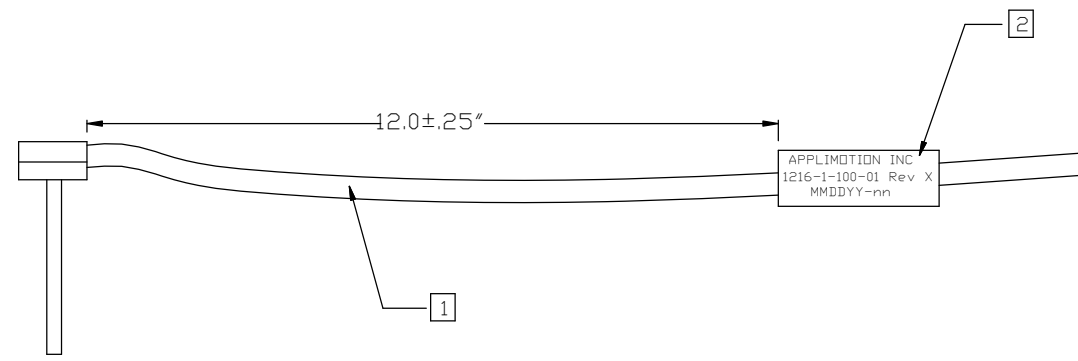
BLK - PHASE A
 RED - PHASE B
 WHT - PHASE C
 GRN - CASE GROUND

THIS DRAWING CONTAINS PROPRIETARY INFORMATION OF APPLIMOTION AND MAY NOT BE IN WHOLE OR IN PART, DUPLICATED OR DISCLOSED OR USED FOR MANUFACTURE OF ANY PART DISCLOSED HEREIN WITHOUT THE PRIOR WRITTEN PERMISSION OF APPLIMOTION

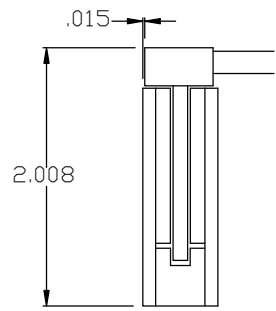
CONFIDENTIAL

| | | | |
|-----------------------------|------------------|--------------------------------|---|
| APPLIMOTION, INC. | | CAGE CODE: 3DRL5 | DRAWING SYMBOLS & TOLERANCE PER ANSI Y14.5 |
| DWG NO: 1216-1-095-01 | PROJECT: 1216 | THIRD ANGLE PROJECTION: | UNLESS OTHERWISE SPECIFIED ALL DIMENSIONS ARE IN INCHES TOLERANCES ARE: |
| TITLE: FORCER, INTERFACE | | SHEET: 1 of 2 | DECIMALS LINEAR ANGULAR .X ±0.02 ±.5° .XX ±0.01 ±0.2° .XXX ±0.005 ±0.01° |
| DRAWN BY: DML 5/23/07 | CHECKED BY: | APPROVED BY: SRP 5/23/07 | SCALE : NTS UNITS : INCHES |
| | | SURFACE FINISH: N/A | |

| REV. | DCN: | DESCRIPTION OF CHANGE: | DATE: | SIGN |
|------|--------|------------------------------------|-----------|------|
| A | 000800 | INITIAL RELEASE | 19-DEC-07 | DML |
| B | 002917 | CHANGED NOTE 1. CABLE WAS 3X 24AWG | 03-FEB-12 | ADR |



FORCER SHOWN ASSEMBLED WITH
MAGNET TRACK
(FOR REFERENCE ONLY)



NOTES

- 1 CABLE: 4X28AWG PVC, BRAIDED SHIELD
LENGTH: 48"
- 2 HEAT SHRINK LABEL
"APPLIMOTION " (xx = CURRENT REV LEVEL)
"1216-1-095-01 REV xx" (xx = CURRENT REV LEVEL)
"MMDDYY-nn" (nn = SEQUENTIAL # ISSUED PER DATE)

| | | | | | |
|--|--------------------------|----------------------------|-----------------------------|-------------------------------|---|
| THIS DRAWING CONTAINS PROPRIETARY INFORMATION OF APPLIMOTION AND MAY NOT BE IN WHOLE OR IN PART, DUPLICATED OR DISCLOSED OR USED FOR MANUFACTURE OF ANY PART DISCLOSED HEREIN WITHOUT THE PRIOR WRITTEN PERMISSION OF APPLIMOTION CONFIDENTIAL | APPLIMOTION, INC. | | | CAGE CODE: 3DRL5 | DRAWING SYMBOLS & TOLERANCE PER ANSI Y14.5 UNLESS OTHERWISE SPECIFIED ALL DIMENSIONS ARE IN INCHES TOLERANCES ARE: DECIMALS LINEAR ANGULAR .X ±0.02 ±.5° .XX ±0.01 ±0.2° .XXX ±0.005 ±0.01° |
| | DWG NO. 1216-1-095-01 | | PROJECT: 1216 | THIRD ANGLE PROJECTION: | |
| | TITLE: FORCER, INTERFACE | | SHEET 2 of 2 | | |
| | DRAWN BY: DML 5/23/07 | CHECKED BY: SRP 5/23/07 | APPROVED BY: SRP 5/23/07 | SCALE : NTS UNITS : INCHES | |
| | | | SURFACE FINISH : N/A | | |