

REV.	DCN:	DESCRIPTION OF CHANGE:	DATE:	SIGN
1	00xxxx	INITIAL RELEASE		GSM

DRAFT

FORCER ASSY P/N:
1617-2-000-12

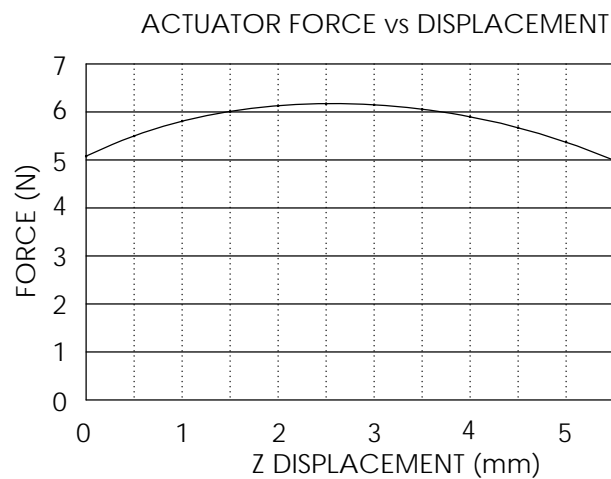
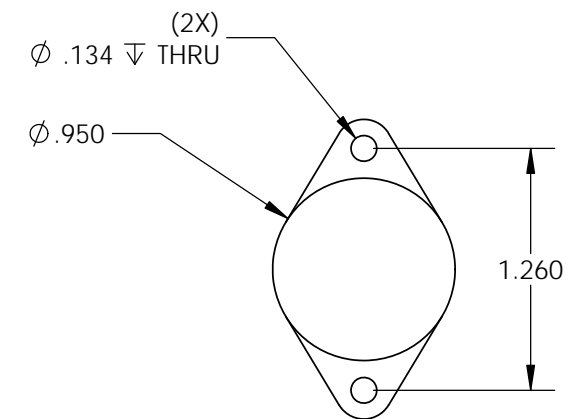
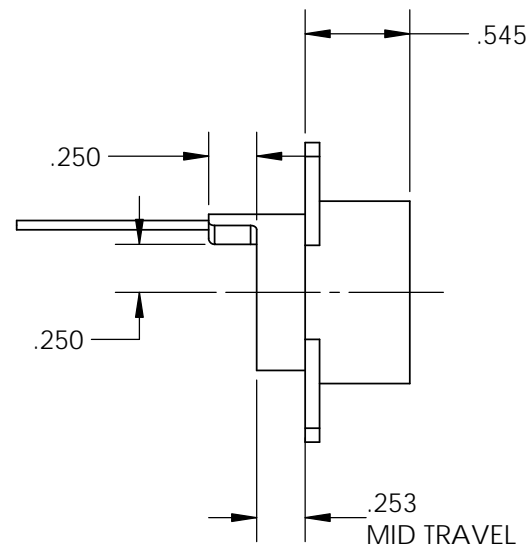
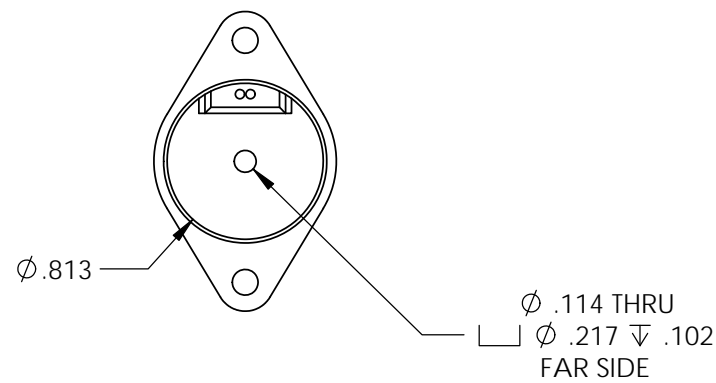
**PERFORMANCE WHEN MATED WITH
MAGNET ASSEMBLY IAW 1617-1-200-01:**

Kf : 21.5 (±10%) oz/Apk
 Res : 12.7 (±12.5%) OHM
 STROKE: 5.0mm
 MAX WINDING TEMP: 155 °C

POWER LEADS:

24 AWG, 24" MIN LENGTH, TEFLON COATED, PVC OUTER JACKET, W/SHIELD

WHT (+)
BLK (-)



NOTES (UNLESS OTHERWISE SPECIFIED):

1.) (+) VOLTAGE ON WHITE WIRE TO PRODUCE FORCE IN POSITIVE DIRECTION

THIS DRAWING CONTAINS PROPRIETARY INFORMATION OF APPLIMOTION, INC. AND MAY NOT BE IN WHOLE OR IN PART, DUPLICATED OR DISCLOSED OR USED FOR MANUFACTURE OF ANY PART DISCLOSED HEREIN WITHOUT THE PRIOR WRITTEN PERMISSION OF APPLIMOTION INC.		APPLIMOTION, INC.		CAGE CODE: 3DRL5	DRAWING SYMBOLS & TOLERANCE PER ANSI Y14.5-2009
DWG. NO: 1617-2-050-12	PROJECT: 1617	TITLE: ACTUATOR, LINEAR		THIRD ANGLE PROJECTION:	UNLESS OTHERWISE SPECIFIED ALL DIMENSIONS ARE IN INCHES TOLERANCES ARE:
DRAWN BY: GSM	CHECKED BY: DML	COG ENGINEER: DML	SCALE: N/A	SURFACE FINISH: SEE NOTES	DECIMALS LINEAR ANGULAR X ±0.020 ±1° XX ±0.010 ±0.2° XXX ±0.005 ±0.01°
6/10/2016		6/10/2016		6/10/2016	
UNITS: INCH		SHEET: 1 of 1		CONFIDENTIAL	

PRINTED COPIES OF THIS DOCUMENT ARE NOT CONTROLLED