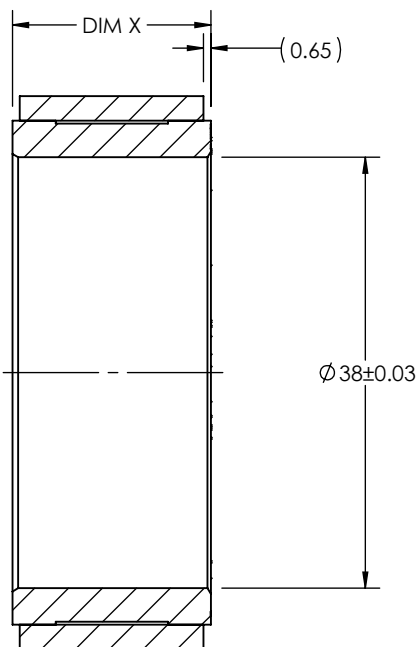
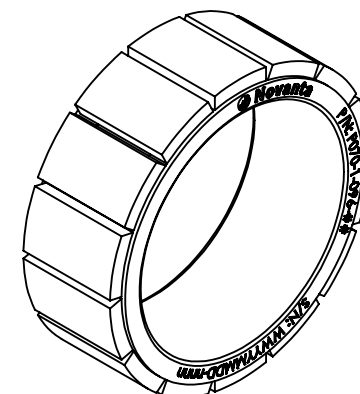
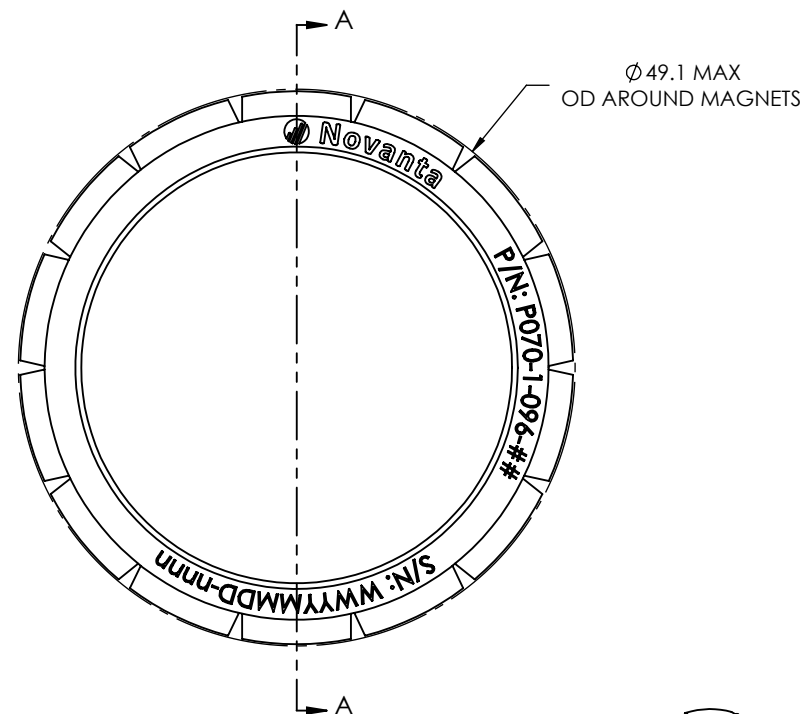


TABULATION BLOCK	
PART NUMBER	DIM X
P070-1-096-01	17.5 ± .05
P070-1-096-02	30.0 ± .05
P070-1-096-03	55.0 ± .05



SECTION A-A



NOTES: (UNLESS OTHERWISE SPECIFIED):

1. ROTOR MOUNTING REQUIREMENTS, REFER TO P070-1-051-01 DOCUMENT
2. ESTIMATED MASS AND OTHER SPECIFICATIONS REFER TO P070-1-052-01 DOCUMENT.
3. HIGHLY MAGNETIZED ASSEMBLY, HANDLE WITH CARE TO AVOID DAMAGE OR INJURY.
4. SHALL BE ROHS AND REACH COMPLIANT TO LATEST VERSION OF REGULATORY SPECIFICATION.
5. MATERIAL AND SURFACE TREATMENT CERTIFICATIONS SHALL BE PROVIDED WITH EACH LOT.

B	007805	SEE DCN	2021-DEC-20	RMH
A	007630	TRANSFER TO PRODUCTION, CHANGE WORDING FOR 49.1 DIAMETER DIMENSION AND MAKE 0.65 A REF DIM	2021-JUN-21	AFT
1	007589	INITIAL RELEASE	2021-FEB-17	ARL
REV	DCN	DESCRIPTION OF CHANGE	DATE	SIGN

**CONFIDENTIAL**

THIS DRAWING CONTAINS PROPRIETARY INFORMATION OF CELERA MOTION AND MAY NOT BE IN WHOLE OR IN PART, DUPLICATED OR DISCLOSED OR USED FOR MANUFACTURE OF ANY PART. DISCLOSED HEREIN WITHOUT THE PRIOR WRITTEN PERMISSION OF CELERA MOTION.



A Novanta Company



DRAWN IAW ASME Y14.5-2009

X. ± 1.25 X.XX ± 0.125  
X.X ± 0.25 X.XXX ± 0.0125  
ANGULAR: X ± 1°

UNITS  
MM

TITLE: **ROTOR INTERFACE DRAWING**

MATERIAL: N/A  
TREATMENT: N/A  
SURFACE FINISH: N/A

DRWN: A. LARKEY 2/12/2021  
CHKD: S. DAWSON 2/12/2021  
APPVD: S. DAWSON 2/12/2021

DRAWING NUMBER:  
**P070-1-096-XX**  
SCALE: 1:1  
SIZE: A SHEET 1 of 1

REV  
**B**