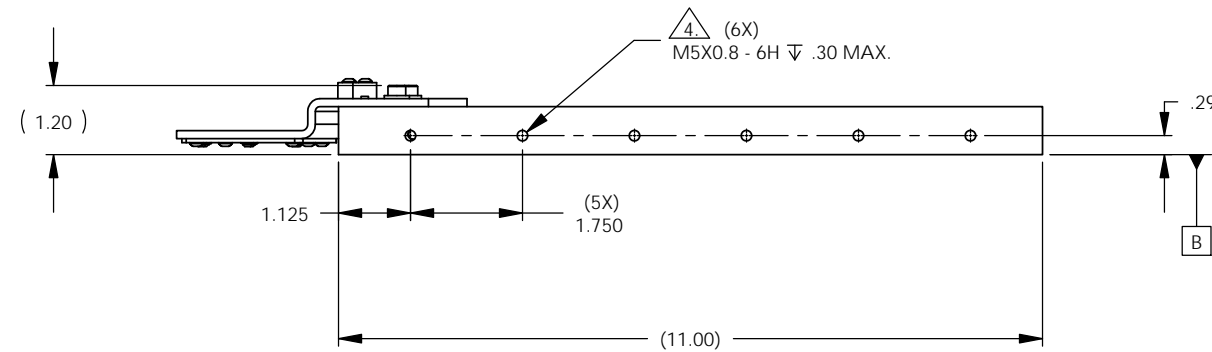
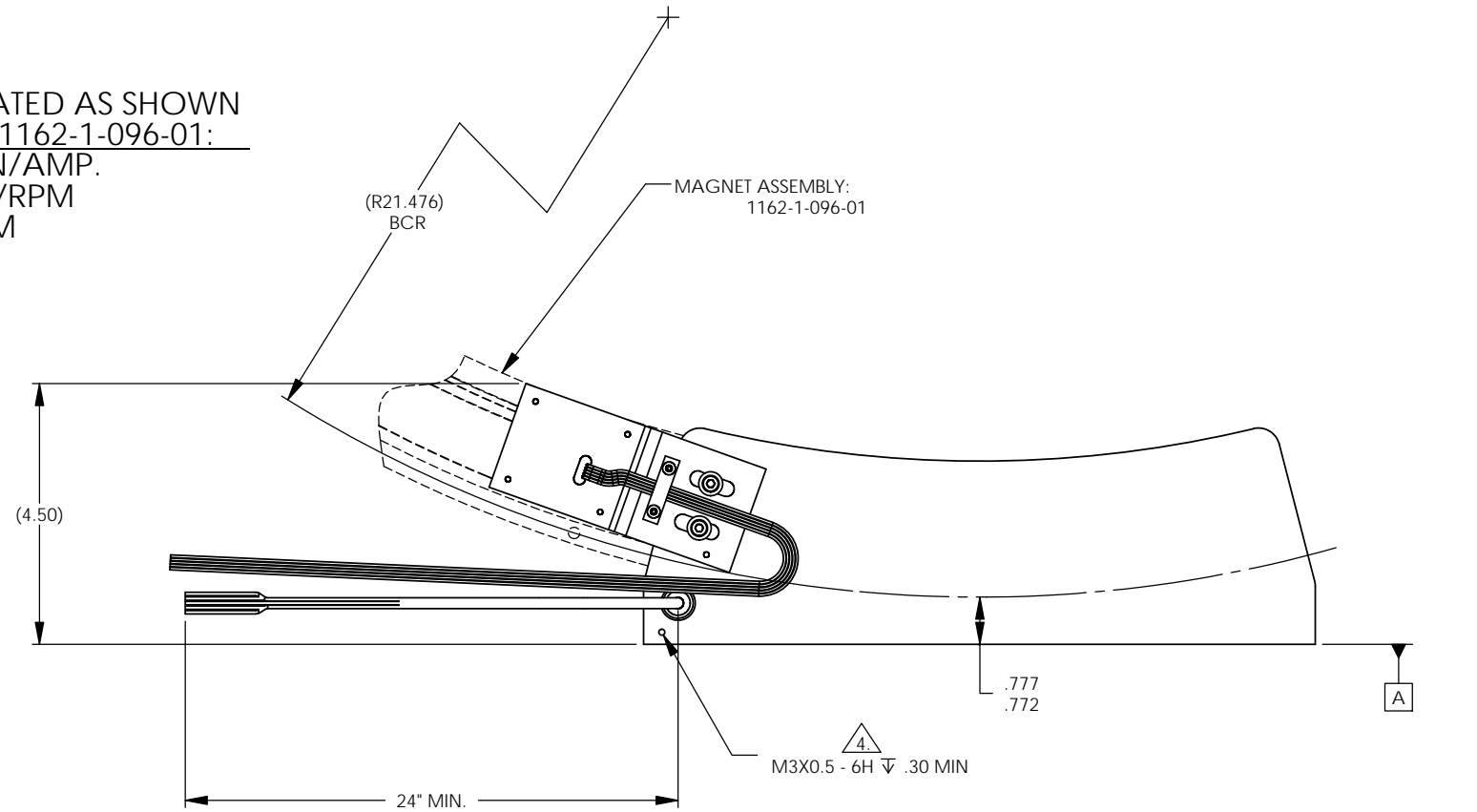


FORCER ASSY P/N:  
1162-1-090-01

PERFORMANCE WHEN MATED AS SHOWN  
WITH MAGNET ASSEMBLY 1162-1-096-01:

Kt: 1600 ( $\pm 10\%$ ) OZ-IN/AMP.  
Ke: 1250 ( $\pm 10\%$ ) Vpk/RPM  
Res: 57.0 ( $\pm 10\%$ ) OHM  
L : 32.0 ( $\pm 25\%$ ) mH

REV.	DCN:	DESCRIPTION OF CHANGE:	DATE:	SIGN
A	000370	INITIAL RELEASE	21-JUL-2006	A.L.
B	002674	CHANGED NOTE 1. WAS $\phi 21.476$	28-OCT-11	ADR



**NOTES:**

1.) ALIGN THE FORCER RADIALLY SO THE FORCER DATUM A IS .777"(.772" OUTSIDE OF BOLT CIRCLE (R21.476") ON MAGNET ASSEMBLY: 1162-1-096-01.

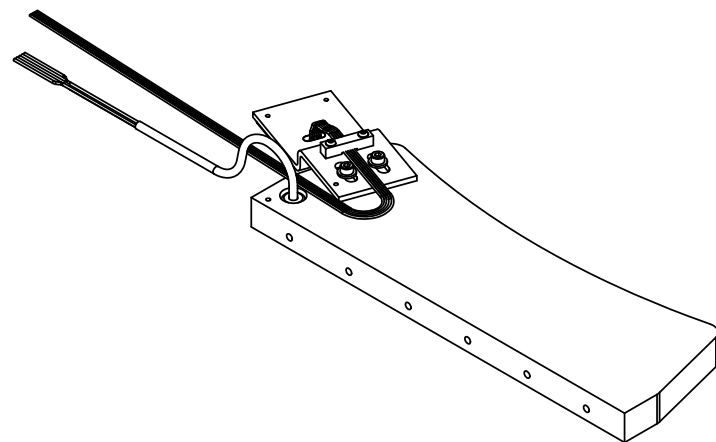
2.) FORCER SHOULD BE MOUNTED SO THAT THE AIR GAP BETWEEN THE FORCER DATUM B AND THE MAGNET ASSEMBLY IS .030" NOMINALLY.

3.) LEAD COLOR CODE:  
PWR LEADS - 22 AWG, TEFLON COATED  
RED - PHASE A  
BLK - PHASE B  
WHT - PHASE C

HALL LEADS - 28 AWG COLORED RIBBON  
GRN - +5 VOLTS  
YLW - GND  
ORG - HALL 2  
RED - HALL 1  
BRN - HALL 3

TEMP. SWITCH - 22 AWG, TEFLON COATED  
CANTHERM P/N: F1110025ACFA06E  
NORMALLY CLOSED  
BLU - TEMP SWITCH  
BLU - TEMP SWITCH

$\triangle 4.$  DEPTH .300", DO NOT DRILL.



THIS DRAWING CONTAINS PROPRIETARY INFORMATION OF APPLIMOTION AND MAY NOT BE IN WHOLE OR IN PART, DUPLICATED OR DISCLOSED OR USED FOR MANUFACTURE OF ANY PART DISCLOSED HEREIN WITHOUT THE PRIOR WRITTEN PERMISSION OF APPLIMOTION		<b>APPLIMOTION, INC.</b>		CAGE CODE: 3DRL5	DRAWING SYMBOLS & TOLERANCE PER ANSI Y14.5
DWG. NO: 1162-1-095-01	PROJECT: 1162	THIRD ANGLE PROJECTION:		UNLESS OTHERWISE SPECIFIED ALL DIMENSIONS ARE IN INCHES TOLERANCES ARE:	
TITLE: FORCER INTERFACE		SHEET 1 of 1		DECIMALS LINEAR ANGULAR X $\pm 0.020$ $\pm 1^\circ$ XX $\pm 0.010$ $\pm 0.2^\circ$ XXX $\pm 0.005$ $\pm 0.01^\circ$	
DRAWN BY: ARL	CHECKED BY:	APPROVED BY: SRP	SCALE: N/A	SURFACE FINISH: N/A	
07/07/2006		07/21/2006	UNITS: INCH		

**CONFIDENTIAL**

6

5

4

3

2

1

FORCER ASSY P/N:  
1162-1-100-01

REV.	DCN:	DESCRIPTION OF CHANGE:	DATE:	SIGN
A	002439	INITIAL RELEASE	18-JUL-11	JPC

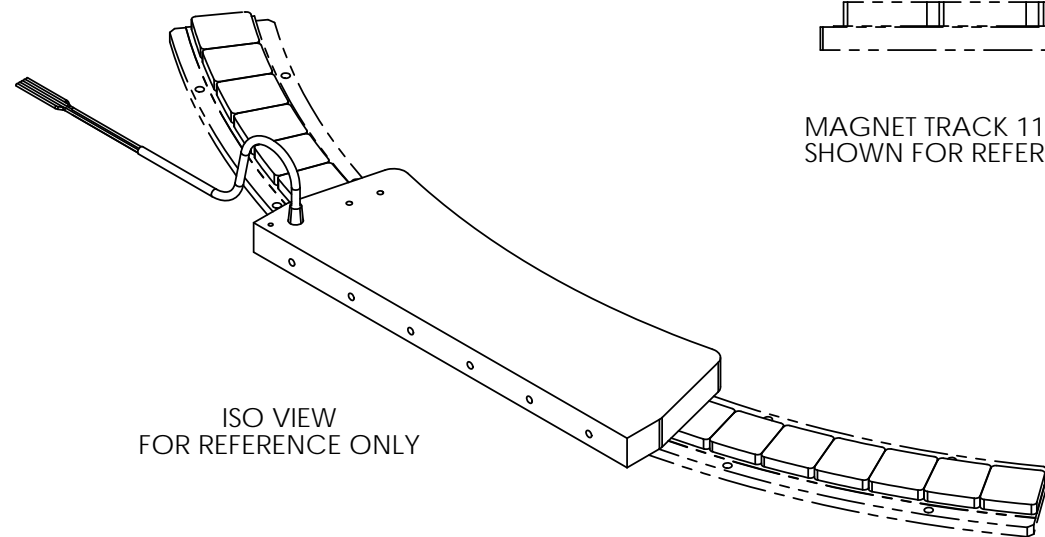
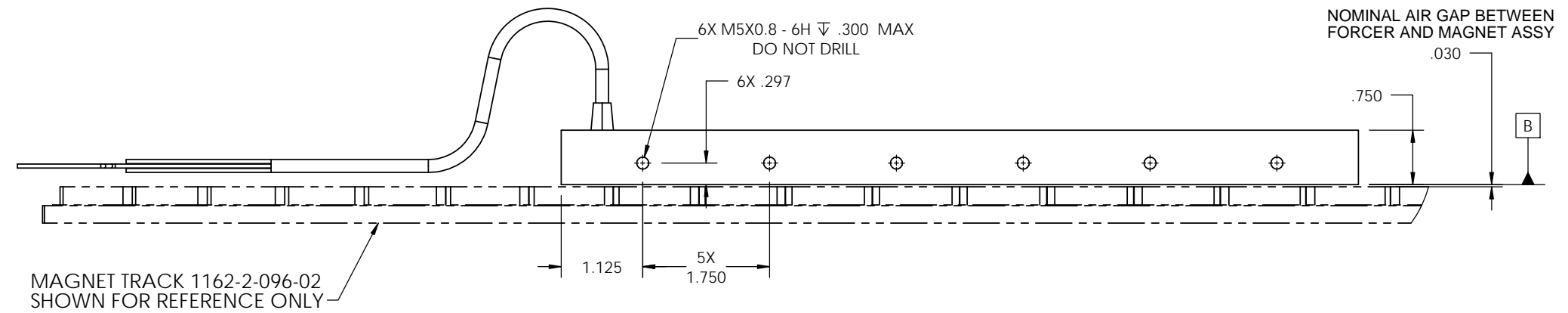
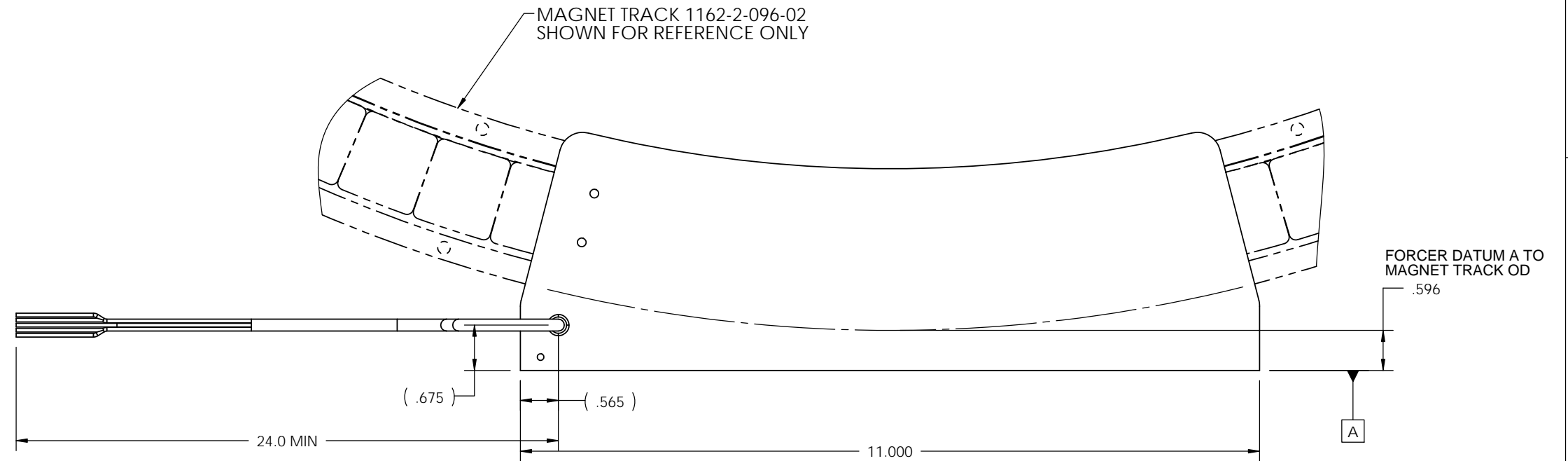
PERFORMANCE WHEN MATED AS SHOWN  
WITH MAGNET ASSEMBLY 1162-2-096-02:

Kt: 1600 ( $\pm 10\%$ ) OZ-IN/AMP.  
Ke: 1250 ( $\pm 10\%$ ) Vpk/RPM  
Res: 57.0 ( $\pm 10\%$ ) OHM  
L : 32.0 ( $\pm 25\%$ ) mH

LEAD COLOR CODE:

PWR LEADS - 22 AWG, TEFLON COATED  
RED - PHASE A  
BLK - PHASE B  
WHT - PHASE C

TEMP. SWITCH - 22 AWG, TEFLON COATED  
CANTHERM P/N: F1110025ACFA06E  
NORMALLY CLOSED  
BLU - TEMP SWITCH  
BLU - TEMP SWITCH



ISO VIEW  
FOR REFERENCE ONLY

THIS DRAWING CONTAINS PROPRIETARY INFORMATION OF APPLIMOTION, INC. AND MAY NOT BE IN WHOLE OR IN PART, DUPLICATED OR DISCLOSED OR USED FOR MANUFACTURE OF ANY PART DISCLOSED HEREIN WITHOUT THE PRIOR WRITTEN PERMISSION OF APPLIMOTION INC.				<b>APPLIMOTION, INC.</b>		CAGE CODE: 3DRL5	DRAWING SYMBOLS & TOLERANCE PER ANSI Y14.5
DWG. NO: 1162-1-095-02		PROJECT: 1162		THIRD ANGLE PROJECTION:		UNLESS OTHERWISE SPECIFIED ALL DIMENSIONS ARE IN INCHES TOLERANCES ARE:	
TITLE: FORCER INTERFACE				SHEET 1 of 1		DECIMALS LINEAR ANGULAR	
DRAWN BY: JPC	CHECKED BY: DML	COG ENGINEER: DML	SCALE: NTS	SURFACE FINISH: N/A		X	±0.020 ±1*
7/18/2011	7/18/2011	7/18/2011	UNITS: INCH			XX	±0.010 ±0.2*
						XXX	±0.005 ±0.01*

**CONFIDENTIAL**

PRINTED COPIES OF THIS DOCUMENT ARE NOT CONTROLLED

6

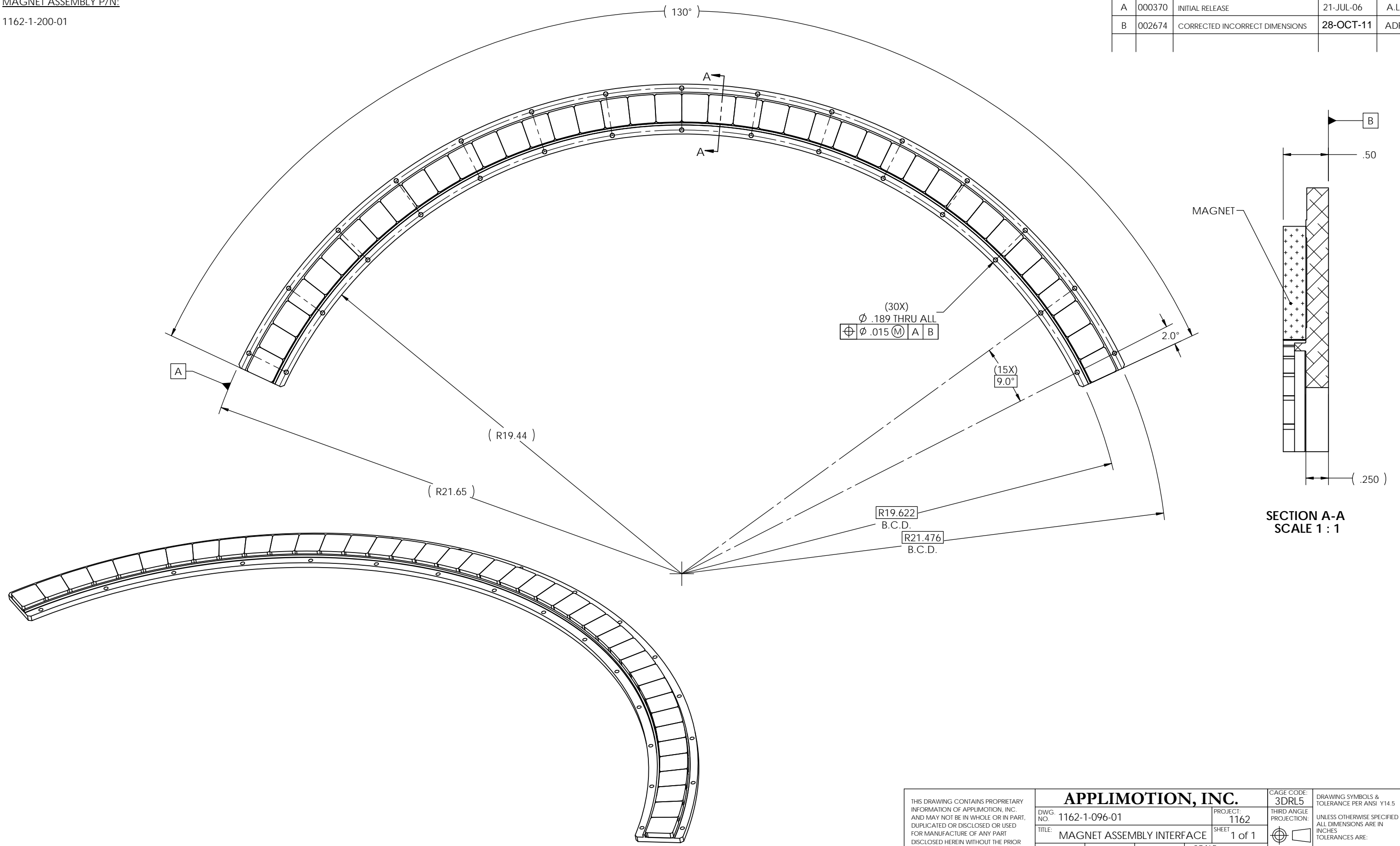
5

4

3

MAGNET ASSEMBLY P/N:  
1162-1-200-01

REV.	DCN:	DESCRIPTION OF CHANGE:	DATE:	SIGN
A	000370	INITIAL RELEASE	21-JUL-06	A.L.
B	002674	CORRECTED INCORRECT DIMENSIONS	28-OCT-11	ADR



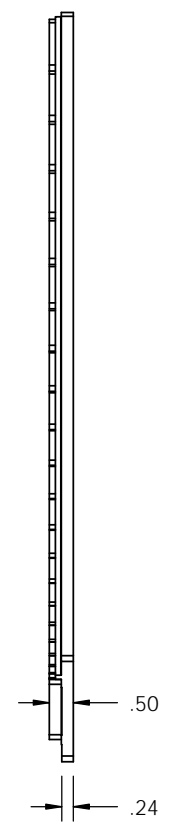
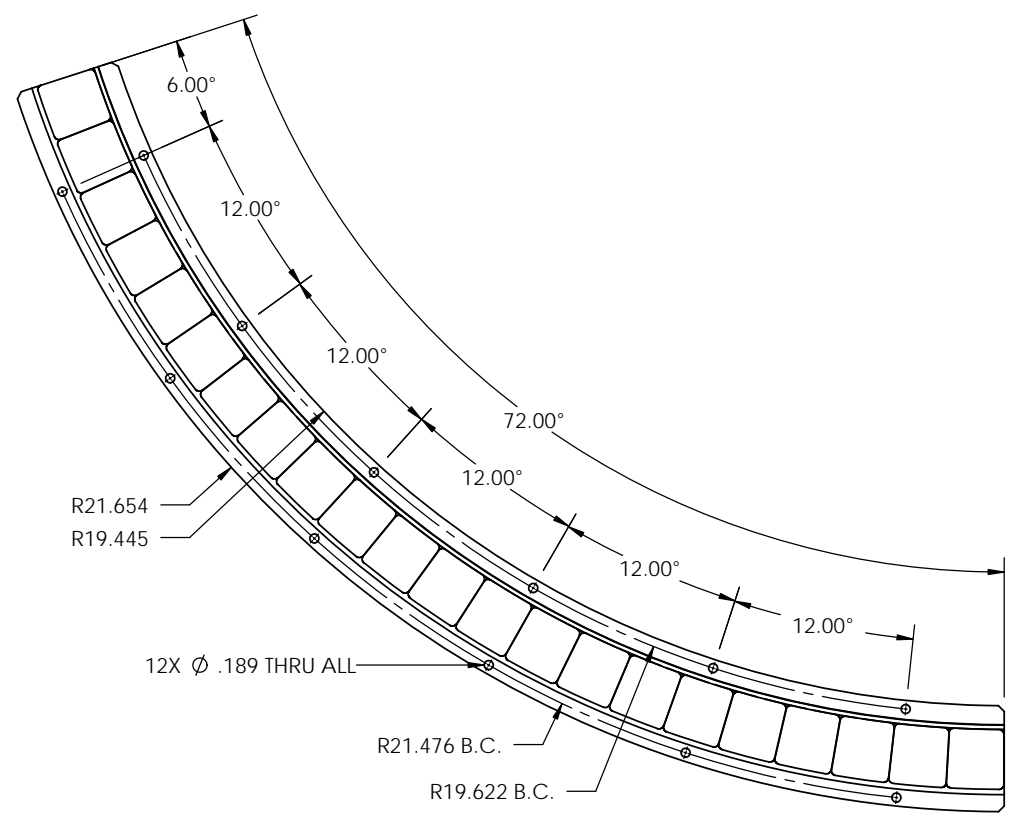
SECTION A-A  
SCALE 1 : 1

THIS DRAWING CONTAINS PROPRIETARY INFORMATION OF APPLIMOTION, INC. AND MAY NOT BE IN WHOLE OR IN PART, DUPLICATED OR DISCLOSED OR USED FOR MANUFACTURE OF ANY PART DISCLOSED HEREIN WITHOUT THE PRIOR WRITTEN PERMISSION OF APPLIMOTION INC.		<b>APPLIMOTION, INC.</b>		CAGE CODE: 3DRL5	DRAWING SYMBOLS & TOLERANCE PER ANSI Y14.5 UNLESS OTHERWISE SPECIFIED ALL DIMENSIONS ARE IN INCHES TOLERANCES ARE:
DWG. NO.: 1162-1-096-01	PROJECT: 1162	TITLE: MAGNET ASSEMBLY INTERFACE	SHEET: 1 of 1	THIRD ANGLE PROJECTION:	DECIMALS    LINEAR    ANGULAR X            ±0.020    ±1° XX          ±0.010    ±0.2° XXX        ±0.005    ±0.01°
DRAWN BY: ARL 07/07/06	CHECKED BY:	COG ENGINEER SRP 07/21/06	SCALE : N1S UNITS : INCH	SURFACE FINISH: N/A	

**CONFIDENTIAL**

PRINTED COPIES OF THIS DOCUMENT ARE NOT CONTROLLED

REV.	DCN:	DESCRIPTION OF CHANGE:	DATE:	SIGN
A	002375	INITIAL RELEASE	21-JUN-11	JPC



NOTES: (UNLESS OTHERWISE SPECIFIED)  
 1. MAGNET ASSY P/N: 1162-1-200-02

THIS DRAWING CONTAINS PROPRIETARY INFORMATION OF APPLIMOTION AND MAY NOT BE IN WHOLE OR IN PART, DUPLICATED OR DISCLOSED OR USED FOR MANUFACTURE OF ANY PART DISCLOSED HEREIN WITHOUT THE PRIOR WRITTEN PERMISSION OF APPLIMOTION

**CONFIDENTIAL**

<b>APPLIMOTION, INC.</b>		CAGE CODE: 3DRL5	DRAWING SYMBOLS & TOLERANCE PER ANSI Y14.5
DWG NO: 1162-1-096-02	PROJECT: 1162	THIRD ANGLE PROJECTION: 	UNLESS OTHERWISE SPECIFIED ALL DIMENSIONS ARE IN INCHES TOLERANCES ARE:
TITLE: MAGNET TRACK INTERFACE DWG		SHEET 1 of 1	DECIMALS    LINEAR    ANGULAR .X           ±0.02           ±.5° .XX          ±0.01           ±0.2° .XXX        ±0.005          ±0.01°
DRAWN BY: DML 6/13/11	CHECKED BY: JPC 6/21/11	COG ENGINEER DML 6/13/11	SCALE : NTS UNITS : INCHES
SURFACE FINISH : N/A			

PRINTED COPIES OF THIS DOCUMENT ARE NOT CONTROLLED